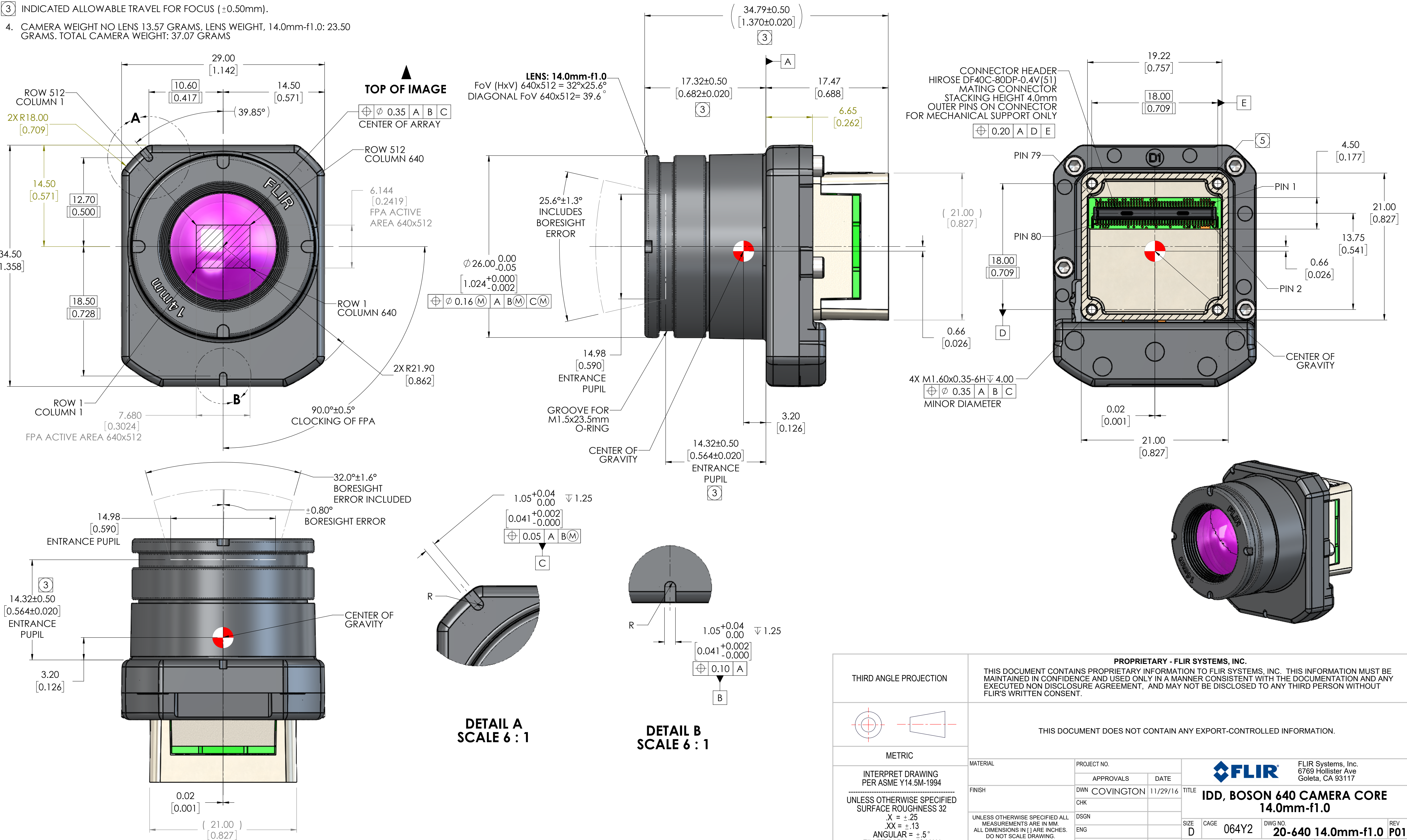


NOTES: UNLESS OTHERWISE SPECIFIED

1. INDICATED DIMENSIONS ARE FOR AN ARRAY SIZE OF 640x512@12µm.
2. CONECTOR INTERFACE: HIROSE DF40C-80DP-0.4V(51). MATING CONNECTOR HIROSE DF40C(4.0)80DS-0.4V(51). FOR PIN-OUT DESIGNATIONS SEE BOSON CAMERA USER MANUAL.
3. INDICATED ALLOWABLE TRAVEL FOR FOCUS ( $\pm 0.50\text{mm}$ ).
4. CAMERA WEIGHT NO LENS 13.57 GRAMS, LENS WEIGHT, 14.0mm-f1.0: 23.50 GRAMS. TOTAL CAMERA WEIGHT: 37.07 GRAMS

5 THE INDICATED SURFACE IS THE MOST OPTIMAL MOUNTING/HEATSINKING SURFACE IN ORDER TO PROVIDE THE MOST UNIFORM THERMAL PERFORMANCE OF THE BOSON CAMERA CORE.

REVISIONS				
ZONE	REV	DESCRIPTION	DATE	APPROVED
	P01	PRELIMINARY	11/15/2016	



DWG NO. 20-640 14.0mm-f1.0 SH 1 REV P01