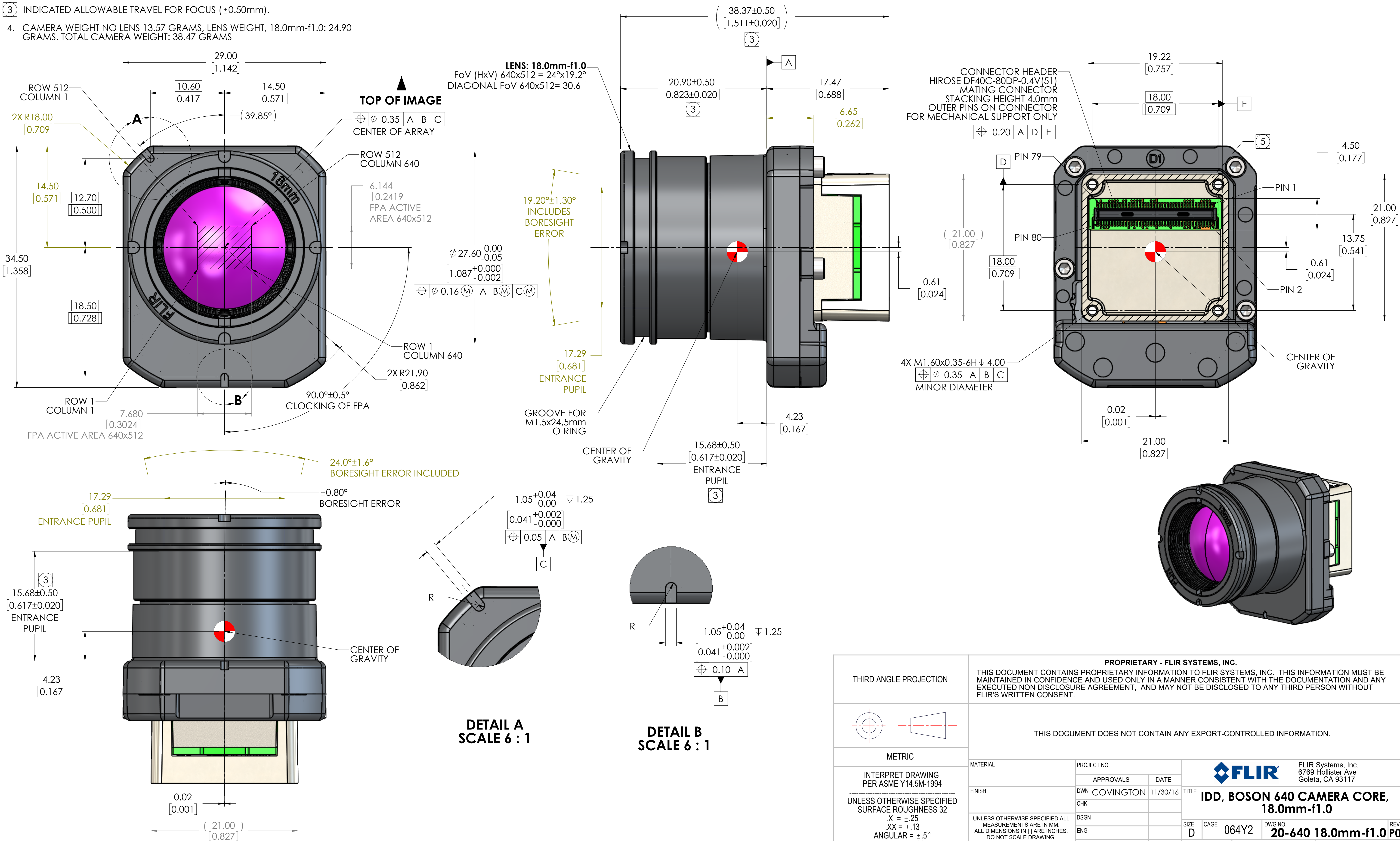


NOTES: UNLESS OTHERWISE SPECIFIED

1. INDICATED DIMENSIONS ARE FOR AN ARRAY SIZE OF 640x512@12µm.
2. CONECTOR INTERFACE: HIROSE DF40C-80DP-0.4V(51). MATING CONNECTOR HIROSE DF40C(4.0)80DS-0.4V(51). FOR PIN-OUT DESIGNATIONS SEE BOSON CAMERA USER MANUAL.
3. INDICATED ALLOWABLE TRAVEL FOR FOCUS ($\pm 0.50\text{mm}$).
4. CAMERA WEIGHT NO LENS 13.57 GRAMS, LENS WEIGHT, 18.0mm-f1.0: 24.90 GRAMS. TOTAL CAMERA WEIGHT: 38.47 GRAMS

5 THE INDICATED SURFACE IS THE MOST OPTIMAL MOUNTING/HEATSINKING SURFACE IN ORDER TO PROVIDE THE MOST UNIFORM THERMAL PERFORMANCE OF THE BOSON CAMERA CORE.

REVISIONS				
ZONE	REV	DESCRIPTION	DATE	APPROVED
	P01	PRELIMINARY	11/15/2016	



THIRD ANGLE PROJECTION				
THIS DOCUMENT DOES NOT CONTAIN ANY EXPORT-CONTROLLED INFORMATION.				
MATERIAL				
PROJECT NO.				
APPROVALS				
DATE				
FINISH				
DWN COVINGTON				
CHK				
UNLESS OTHERWISE SPECIFIED ALL MEASUREMENTS ARE IN MM. ALL DIMENSIONS IN () ARE INCHES. DO NOT SCALE DRAWING.				
DSGN				
ENG				
CALC WT:				
APP				
TITLE				
IDB, BOSON 640 CAMERA CORE, 18.0mm-f1.0				
SIZE				
D 064Y2				
DWG NO.				
20-640 18.0mm-f1.0 P01				
REV				
SCALE 4:1 PRINTED: 4/28/2020 SHEET 1 OF 1				
SOLIDWORKS MODEL: 20-Boson Camera Core MODEL REVISION: N				